

まったり音頭

$\text{♩} = 116 (\text{♪} = \text{♩} = \text{♩}^3)$

パート A

パート B

パート C

パート D

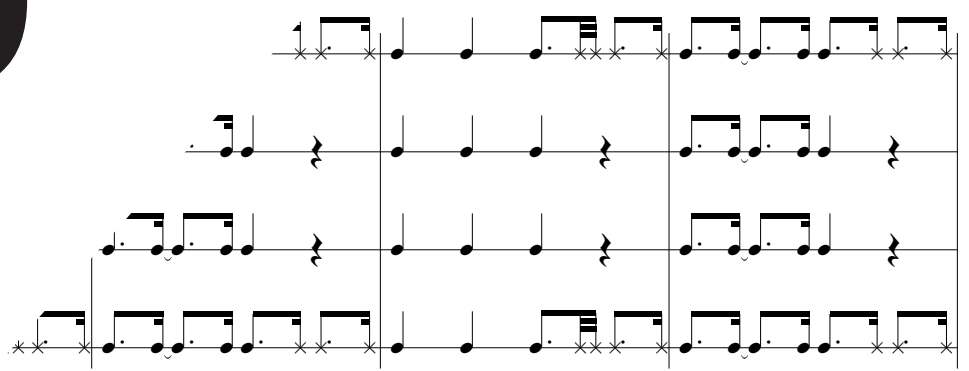
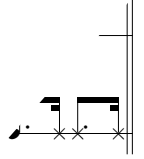
締太鼓

平太鼓

桶胴太鼓

宮太鼓

Sample



宮

A

B

C

D

締

平

桶胴

宮

Sample

mf

mf

mf

mf

mf

宮

A

B

C

D

締

平

桶胴

宮

宮

f

f

f

f

f

f

Sample

A
B
C
D
締
平
桶
宮

Musical notation for staves A, B, C, and D. Staff A is in treble clef with a key signature of two sharps (F# and C#). Staff B is in treble clef with a key signature of two sharps and a dynamic marking of *f*. Staff C is in treble clef with a key signature of two sharps. Staff D is in bass clef with a key signature of two sharps. Below these are two staves for the drum set: 締 (top) and 平 (bottom), both in treble clef with a key signature of two sharps.

桶
宮

$\frac{2}{4}$
 $\frac{2}{4}$

宮

Musical notation for the drum set (桶 and 宮) and a continuation of the melody. The drum set notation consists of two staves: 桶 (top) and 宮 (bottom), both in treble clef with a key signature of two sharps. The melody continues on a single staff in treble clef with a key signature of two sharps, featuring a dynamic marking of *p*.

Sample

A
B
C
D
締
平
桶胴
宮

Musical score for the first system. It includes four staves labeled A, B, C, and D, and four traditional notation staves labeled 締, 平, 桶胴, and 宮. The key signature is one sharp (F#) and the time signature is 4/4. The music is in a slow tempo.

宮

Musical score for the second system. It includes a new staff at the top and three traditional notation staves below it. The music continues from the first system.

Sample

A
B
C
D
締
平
桶
宮

Musical score for the first system. It consists of four staves labeled A, B, C, and D, and four staves for traditional instruments labeled 締, 平, 桶, and 宮. The key signature is two sharps (F# and C#). The first staff (A) has a whole rest. The second staff (B) has a quarter rest followed by a quarter note G4, an eighth note A4, and a quarter note B4. The third staff (C) has a quarter note G4, a triplet of eighth notes (A4, B4, C5), a quarter note B4, and a quarter note A4. The fourth staff (D) has a quarter note G3, a quarter note A3, a quarter note B3, and a quarter note C4. The instrument staves (締, 平, 桶, 宮) have a quarter note G3 with a forte (f) dynamic marking.

宮

Musical score for the second system. It consists of four staves labeled A, B, C, and D, and four staves for traditional instruments labeled 宮. The key signature is two sharps (F# and C#). The first staff (A) has a whole rest. The second staff (B) has a quarter note G4, an eighth note A4, and a quarter note B4. The third staff (C) has a quarter note G4, a quarter note A4, a quarter note B4, and a quarter note C5. The fourth staff (D) has a quarter note G3, a quarter note A3, a quarter note B3, and a quarter note C4. The instrument staves (宮) have a quarter note G3 with a forte (f) dynamic marking.