

かくれんぼ

たなか ひろかず
川島 一朗

アニメ映画「ポケモン ピカチュウのドキドキかくれんぼ」主題歌

Allegro (♩=126 ca.)

キーボード A

Sawtooth Lead

mf

キーボード B

Harmonica

mp

キーボード C

Strings

mp

キーボード D

Piano

sample

組入

mf

Key.A

Key.B

Key.C

Key.D

Musical notation for four keys (Key.A, Key.B, Key.C, Key.D) is shown in the upper left. Key.A features a melodic line with eighth and sixteenth notes. Key.B is mostly empty. Key.C shows a series of chords. Key.D shows a short melodic phrase. A large, bold, black 'sample' watermark is overlaid across the center of the page.

Musical notation for a piano piece, featuring dynamics markings *p* (piano) and *f* (forte). The notation includes a treble clef and a key signature of one flat. The piece consists of several measures of music, with a double bar line indicating a section change. The dynamics markings are placed below the notes.

長

Key.A

Key.B

Key.C

Key.D

Distortion

sample

mf

mf

mf

長

Key.A
Key.B
Key.C
Key.D

This block contains the upper portion of a musical score, featuring four staves labeled Key.A, Key.B, Key.C, and Key.D. Key.A has a treble clef and contains a melodic line with various note values and rests. Key.B and Key.C have treble and bass clefs respectively and contain mostly rests. Key.D has a treble clef and contains a few notes. A large, bold, black 'sample' watermark is superimposed over the right side of this section.

×=棒打ち
mf
mf
mf

This block contains a drum part musical score. It features a top staff with a series of eighth notes, a middle staff with 'x' marks representing drum hits, and two bottom staves with eighth notes. The dynamic marking *mf* is present on the middle and bottom staves. A large, bold, black 'sample' watermark is superimposed over the left side of this section.

長

Key.A
Key.B
Key.C
Key.D

sample

長

Key.A

Key.B

Key.C

Key.D

(Strings)

sample

f

f

f

f

f

f

f

f

f

f

×=棒打ち

×=棒打ち

長

Key.A

Key.B

Key.C

Key.D

(Sua)

to \oplus

Sample

長

Key.A

Key.B

Key.C

Key.D

1

G

H

Whistle

f

sample

mf

mf

長

Key.A

Key.B

Key.C

Key.D

Clean Guitar

mf

I

sample

mf

mf

長

Key.A

Key.B

Key.C

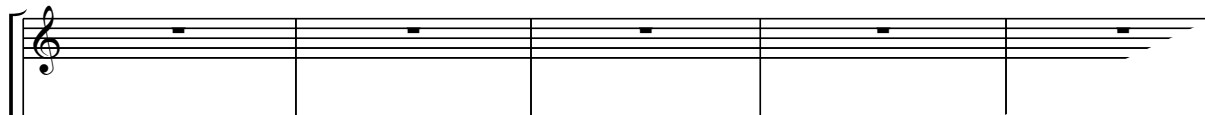
Key.D

This block contains the upper portion of a musical score. It features four staves labeled Key.A, Key.B, Key.C, and Key.D. Key.A is in treble clef, Key.B is in treble clef, Key.C is in bass clef with a time signature of 8, and Key.D is in treble clef. The music consists of various rhythmic patterns and melodic lines. A large, bold, black 'sample' watermark is superimposed over the right side of the page, partially overlapping the musical staves.

長

This block contains the lower portion of a musical score, continuing from the upper section. It features four staves labeled Key.A, Key.B, Key.C, and Key.D. The music consists of various rhythmic patterns and melodic lines. A large, bold, black 'sample' watermark is superimposed over the right side of the page, partially overlapping the musical staves.

Key.A



Key.B



Key.C



Key.D



sample



長

K

Key.A

Key.B

Key.C

Key.D

Strings
mp

sample

p

p

p

p

p

長

D.S. to Coda

Coda

Key.A

Musical staff for Key.A, treble clef, starting with a forte (*f*) dynamic. It features a melodic line with eighth and sixteenth notes, ending with a ritardando (*rit.*) and a fermata.

Key.B

Musical staff for Key.B, treble clef, starting with a forte (*f*) dynamic. It features a sustained chord with a *Har* (harmonic) marking. A dashed line labeled *8va* indicates an octave transposition.

Key.C

Musical staff for Key.C, bass clef, starting with a forte (*f*) dynamic. It features a simple bass line with a few notes.

Key.D

Musical staff for Key.D, treble clef, featuring a short melodic phrase.

sample

Piano accompaniment for the Coda section, showing five staves with *pp* (pianissimo) dynamics and a fermata at the end.

長