

今、咲き誇る花たちよ

▲ 瀧健太郎
▲ 一朗

Rocka Ballad (♩=64 ca.)

NHKソチオリンピック・パラリンピックテーマソング

sample

キーボード A
キーボード B
キーボード C
ベース キーボード
締太鼓
平太鼓
桶胴太鼓
宮太鼓 (大太鼓)
組太
鳴り物

Synth Brass [A]
Pan Flute *f*
Strings *f*
Fletless Bass

sample

Key.A

Key.B

Key.C

Bs.Key.

締

平

桶胴

宮(大太・ナ

絃

鳴り物

sample

Key.A

Key.B

Key.C

Bs.Key.

縮

平

桶胴

宮(大太・ナ)

箏

鳴り物

※和音の部分は2パートに分かれて

※和音

mf

mp

mf

3

C

sample

Key.A

Key.B

Key.C

Bs.Key.

D%

mf

mf

This block contains the first four staves of a Western musical score. The top staff is labeled 'Key.A', the second 'Key.B', the third 'Key.C', and the fourth 'Bs.Key.'. A chord symbol 'D%' is placed above the second measure of the Key.A staff. The dynamic marking 'mf' (mezzo-forte) appears below the first and second measures of the Key.A staff and below the first measure of the Key.B staff.

締
平
桶胴
宮(大太・ナ
箒
鳴り物

This block contains musical notation for six traditional instruments. The notation is arranged in a grid-like fashion with vertical bar lines. The instruments listed on the left are 締, 平, 桶胴, 宮(大太・ナ, 箒, and 鳴り物. The notation for 桶胴, 宮(大太・ナ, 箒, and 鳴り物 shows rhythmic patterns with stems and dots, while 締 and 平 have horizontal lines with dots indicating specific notes or rests.

sample

Key.A
Key.B
Key.C
Bs.Key.

締
平
桶胴
宮(大太・ナ
箆
鳴り物

sample

Key.A

Key.B

Key.C

Bs.Key.

締

平

桶胴

宮(大太・ナ)

箒

鳴り物

sample

The image displays a musical score for a sample. It consists of several staves of music. The top four staves are labeled 'Key.A', 'Key.B', 'Key.C', and 'Bs.Key.' on the left. The bottom three staves are labeled with Japanese characters: '縮' (Shū), '平' (Hei), and '桶胴' (Tsunodomo). Below these is the section '宮(大太・大)' (Miyu (Ōtai・Ōta)), followed by '組' (Kumi) and '鳴り' (Nari). The score includes various musical notations such as treble and bass clefs, notes, rests, and dynamic markings like 'mf' and 'f'. A double bar line with a '2' above it indicates a second ending. The word 'sample' is written in a large, bold, black font across the center of the page, partially overlapping the musical staves.

sample

Key.A
Key.B
Key.C
Bs.Key.

Musical score for four staves: Key.A (treble clef), Key.B (treble clef), Key.C (treble clef), and Bs.Key. (bass clef). The music is in a key with two flats and 4/4 time. The Key.A staff contains mostly rests. The other staves contain various rhythmic patterns including eighth and sixteenth notes, and chords.

締

平

桶胴

宮(大太・大)

組

鳴り

Musical score for a drum set, consisting of four staves. The notation includes vertical stems and horizontal lines representing drum hits and patterns. The score is positioned to the right of the main 'sample' text.

D.S. to Coda

⊕ Coda

H

Key.A

Musical staff for Key.A with dynamic marking *f*

Key.B

Musical staff for Key.B with dynamic marking *f*

Key.C

Musical staff for Key.C with dynamic marking *f*

Bs.Key.

Musical staff for Bs.Key. with dynamic marking *f*

締

Musical staff for 締

平

Musical staff for 平

桶胴

Musical staff for 桶胴

宮(大太・大)

Musical staff for 宮(大太・大)

組

Musical staff for 組

鳴り

Musical staff for 鳴り

sample

Musical staff for 鳴り with dynamic marking *f*

sample

Key.A



Key.B



Key.C



Bs.Key.



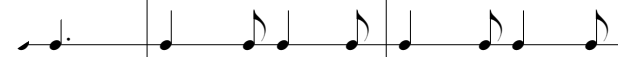
締



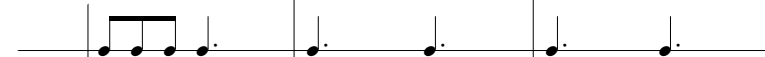
平



桶胴



宮(大太・大)



組



鳴り



sample

Key.A

Key.B

Key.C

Bs.Key.

縮

平

桶胴

宮(大太・大)

組

鳴り