

与作

(和太鼓アレンジ)

♩ = 72

パート A

パート B

パート C

パート D

パート E

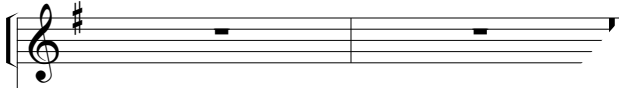
パ-

Sample

Sample

A

A



B



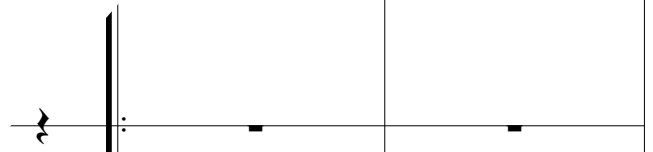
C



D



E



Sample

A

B

C

D

E

Chord Diagram:

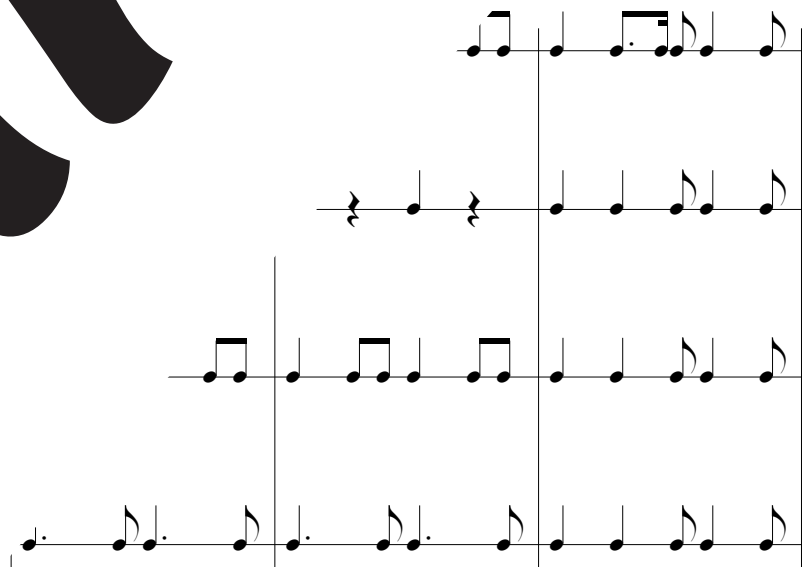
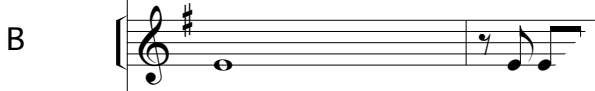
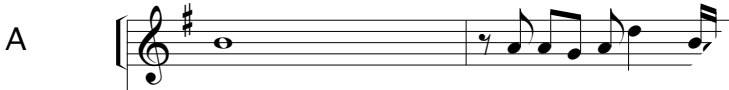
Sample

Sample

The image displays a musical score for five parts, labeled A through E. The score is written in treble clef with a key signature of one sharp (F#). Part A consists of a single staff with a melody starting on a dotted quarter note. Part B has a similar melody with some rests. Part C features a more active melody with eighth notes. Part D shows a simple chordal accompaniment. Part E is a bass line with a steady eighth-note rhythm. A large, bold, black 'Sample' watermark is oriented diagonally across the page, from the bottom left to the top right. Below the main score, there are four additional staves of music, each with a vertical bar line, showing further musical notation.



Sample



Sample

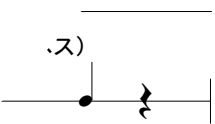
A 


B 

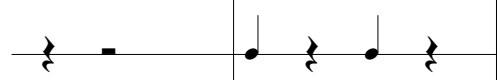
C 

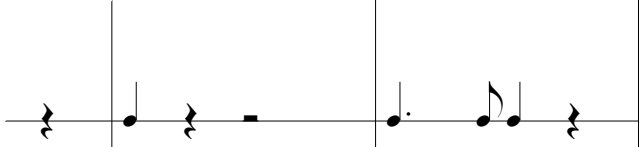
D 


E 











Sample

A



B



C



D



E

