

トレロカモミロ

マリーノ 作曲

♩ = 138 [A]

Part A: Treble clef, 4/4 time, *f*. Notes: quarter rest, quarter note G4, quarter note A4, quarter note B4, quarter note C5, quarter note B4, quarter note A4, quarter note G4, quarter note F4.

Part B(1): Treble clef, 4/4 time, *f*. Notes: quarter rest, quarter note G4, quarter note A4, quarter note B4, quarter note C5, quarter note B4, quarter note A4, quarter note G4, quarter note F4.

Part B(2): Treble clef, 4/4 time, *f*. Notes: quarter rest, quarter note G4, quarter note A4, quarter note B4, quarter note C5, quarter note B4, quarter note A4, quarter note G4, quarter note F4.

Part C: Treble clef, 4/4 time, *f*. Notes: quarter rest, eighth notes G4, A4, B4, C5, B4, A4, G4, quarter note F4.

Part D: Treble clef, 4/4 time, *f*. Notes: quarter rest, quarter note G4, quarter note A4, quarter note B4, quarter note C5, quarter note B4, quarter note A4, quarter note G4, quarter note F4.

Part E: Bass clef, 4/4 time, *f*. Notes: quarter rest, quarter note G3, quarter note A3, quarter note B3, quarter note C4, quarter note B3, quarter note A3, quarter note G3, quarter note F3.

スネア: Treble clef, 4/4 time. Notes: quarter rest, eighth notes G4, A4, B4, C5, B4, A4, G4, quarter note F4.

バス (シ): Treble clef, 4/4 time. Notes: quarter rest, quarter note G4, quarter note A4, quarter note B4, quarter note C5, quarter note B4, quarter note A4, quarter note G4, quarter note F4.

バ: (4): Bass clef, 4/4 time. Notes: quarter rest, quarter note G3, quarter note A3, quarter note B3, quarter note C4, quarter note B3, quarter note A3, quarter note G3, quarter note F3.

シ: Treble clef, 4/4 time. Notes: quarter rest, quarter note G4, quarter note A4, quarter note B4, quarter note C5, quarter note B4, quarter note A4, quarter note G4, quarter note F4.

ダブル: Treble clef, 4/4 time. Notes: quarter rest, eighth notes G4, A4, B4, C5, B4, A4, G4, quarter note F4.

トリオ: Bass clef, 4/4 time, *f*. Notes: quarter rest, eighth notes G3, A3, B3, C4, B3, A3, G3, quarter note F3.

IL TORERO CAMONILLO
©1968 by EDIZIONI BIDERI S. P. A. -NAPOLI (Italia);
Concessionario per Giappone, Japan Broadcast Publishing Co., Ltd.

B

A

Musical staff A in 2/4 time, starting with a treble clef and a *mf* dynamic marking. The notation includes quarter notes, eighth notes, and rests.

B(1)

Musical staff B(1) in 2/4 time, starting with a treble clef. The notation includes quarter notes and eighth notes.

B(2)

Musical staff B(2) in 2/4 time, starting with a treble clef. The notation includes quarter notes and eighth notes.

C

Musical staff C in 2/4 time, starting with a treble clef and a *mf* dynamic marking. The notation includes quarter notes.

D

Musical staff D in 2/4 time, starting with a treble clef and a *mf* dynamic marking. The notation includes quarter notes and eighth notes.

E

Musical staff E in 2/4 time, starting with a bass clef. The notation includes quarter notes.

S.Γ

B.D. (

B.D. (

T.D.

T.T.

A large section of musical notation for multiple staves, including S.Γ, B.D. (, T.D., and T.T. The T.T. staff at the bottom is in 2/4 time with a *mf* dynamic marking. The notation includes quarter notes, eighth notes, and rests.

SAMPLE

A

B(1)

B(2)

C

D

E

SAMPLE

S

B.D. (

B.D.

T.D.

T.T.

SAMPLE

A



B(1)



B(2)



C



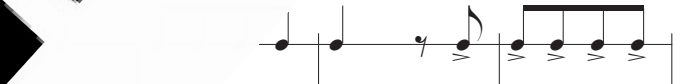
D



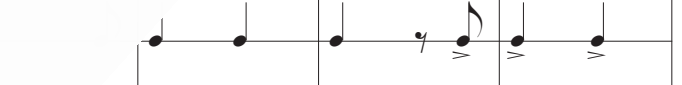
E



S.Γ



B.D. (3)



B.D. (



T.D.



T.T.



C

A

B(1)

B(2)

C

D

E

S

B.D. (

B.D.

T.D.

T.T.

SAMPLE

SAMPLE

A

B(1)

B(2)

C

D

E

S.Γ

B.D. (;

B.D. (

T.D.

T.T.

A

B(1)

B(2)

C

D

E

SAMPLE

S

B.D. (

B.D.

T.D.

T.T.

D

A *f*

B(1) *f*

B(2) *f*

C *f*

D *f* *mf*

E

S.Γ

B.D. ()

B.D. ()

T.D.

T.T. *f*

2.

A

B(1)

B(2)

C

D

E

SAMPLE

S

B.D. (

B.D.

T.D.

T.T.

f

f

f

f

f